

1519 Oban – Lidl GB Ltd.

Size: 6 Aisle 1377

Inner Length: 54.00m

Inner Width: 25.50m

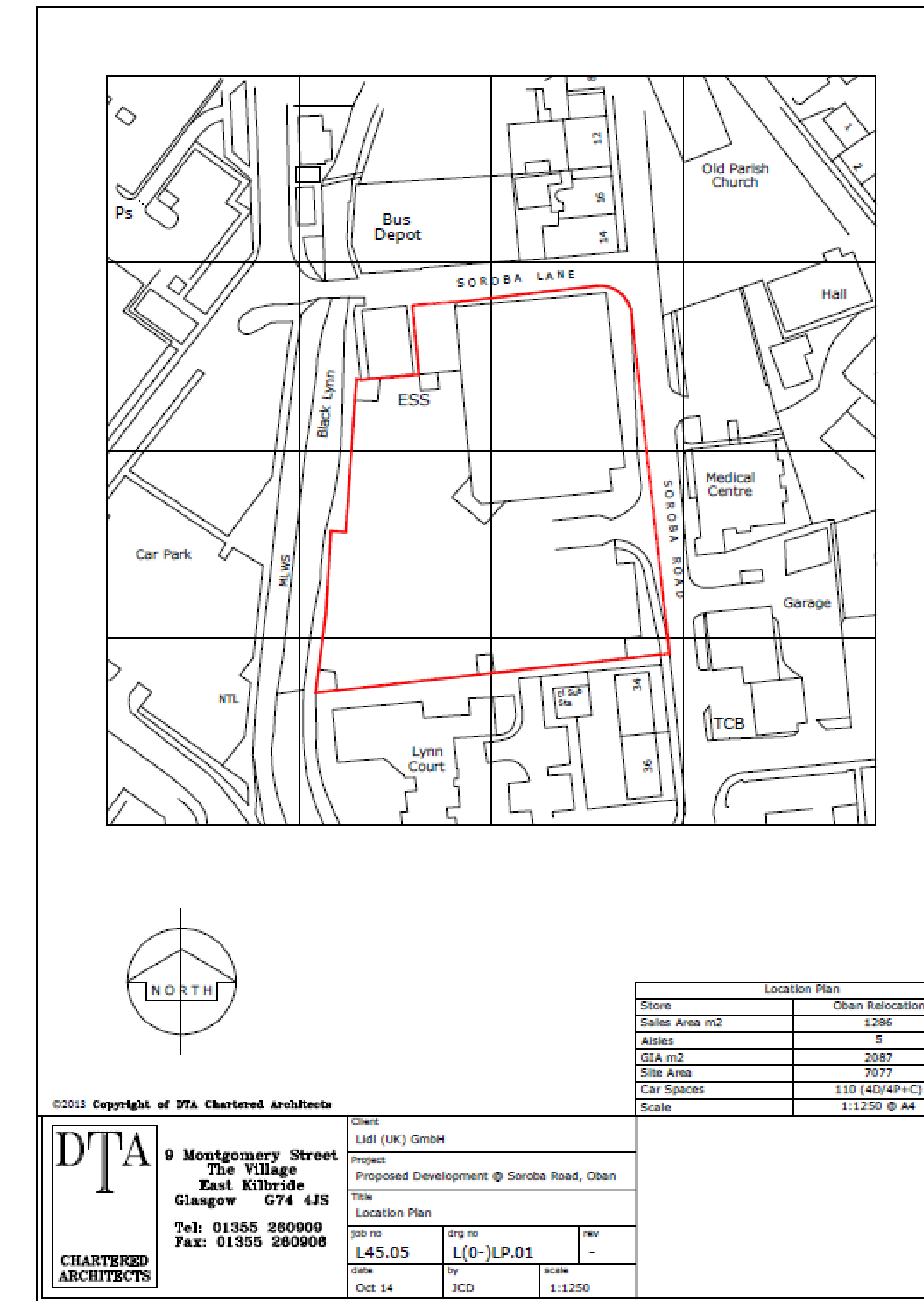
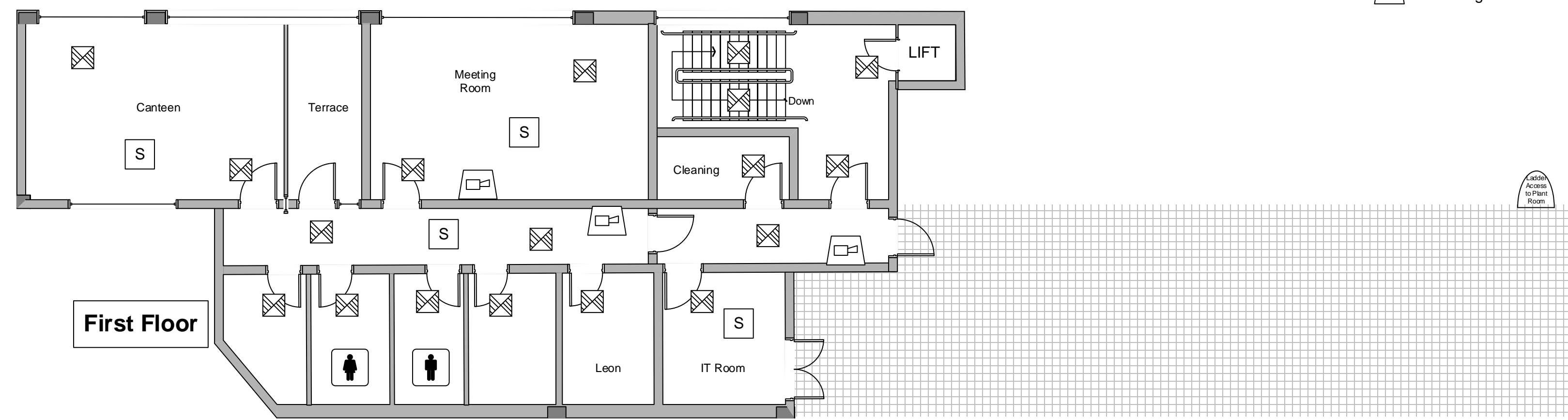
Ceiling Height: NA

Updated: 20_04_21

FIRE SYMBOLS

Scale 1:100

- Portable Water Extinguisher
- Portable Foam Extinguisher
- Portable CO₂ Extinguisher
- Portable Dry Powder Extinguisher
- Fire Blanket
- Smoke Detector
- Heat Detector
- Warning Device Bell
- Warning Device Sounder
- Emergency Light
- Emergency Exit Illuminated Sign
- Call Point
- Warning Device Visual
- Fire Exit Directional Signage
- Smoke Detector in ceiling void
- Fire Control Panel
- All Fire Exits Have A Push Bar & Signage
- Sprinkler (water)



©2013 Copyright of DTA Chartered Architects

DTA Chartered Architects

9 Montgomery Street
The Village
East Kilbride
Glasgow G74 4J5
Tel: 01355 260900
Fax: 01355 260906

Client: LIDL (UK) GMBH
Project: Proposed Development @ Soroka Road, Oban
Title: Location Plan
Date: 14.05.21
Scale: 1:1250

CHILDREN AND YOUNG PERSONS ARE ENTITLED TO ACCESS ALL PUBLIC AREAS OF THE PREMISES

MAJOR VARIATION
APRIL 2021

Alcohol Display Area
Length 31.12m
Height 1.8m
56.01sqm

ALL YEAR ROUND

Alcohol Display Area
Length 5.30m
Height 1.8m
9.54sqm

1st Dec – 2nd Jan ONLY

